



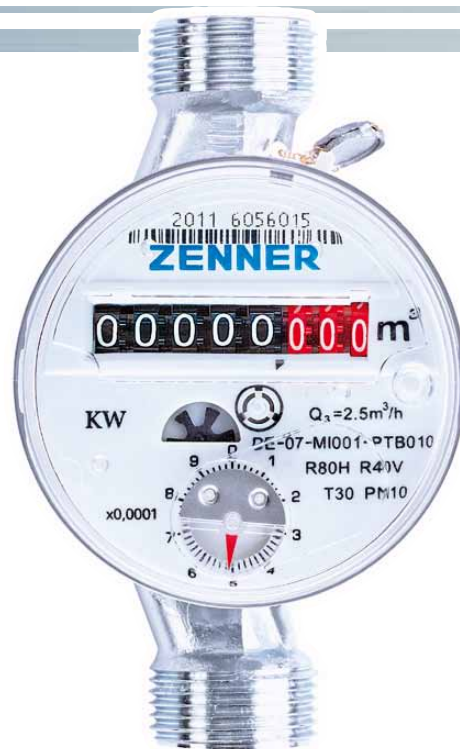
EnergyMetering

ETKD/ETWD

Single-jet dry dial meter

Newly developed counter

Equipped for remote reading



ZENNER
All that counts.

ETKD/ETWD

Single-jet dry dial meter for cold and hot water

The counter of the new ETKD has been conceptually newly thought and technically refined. The result is a counter with a shielded magnetic coupling which delivers optimally results in terms of precision and measuring stability.

Due to a wide range of technical options, the ETKD is best possibly equipped for the future.

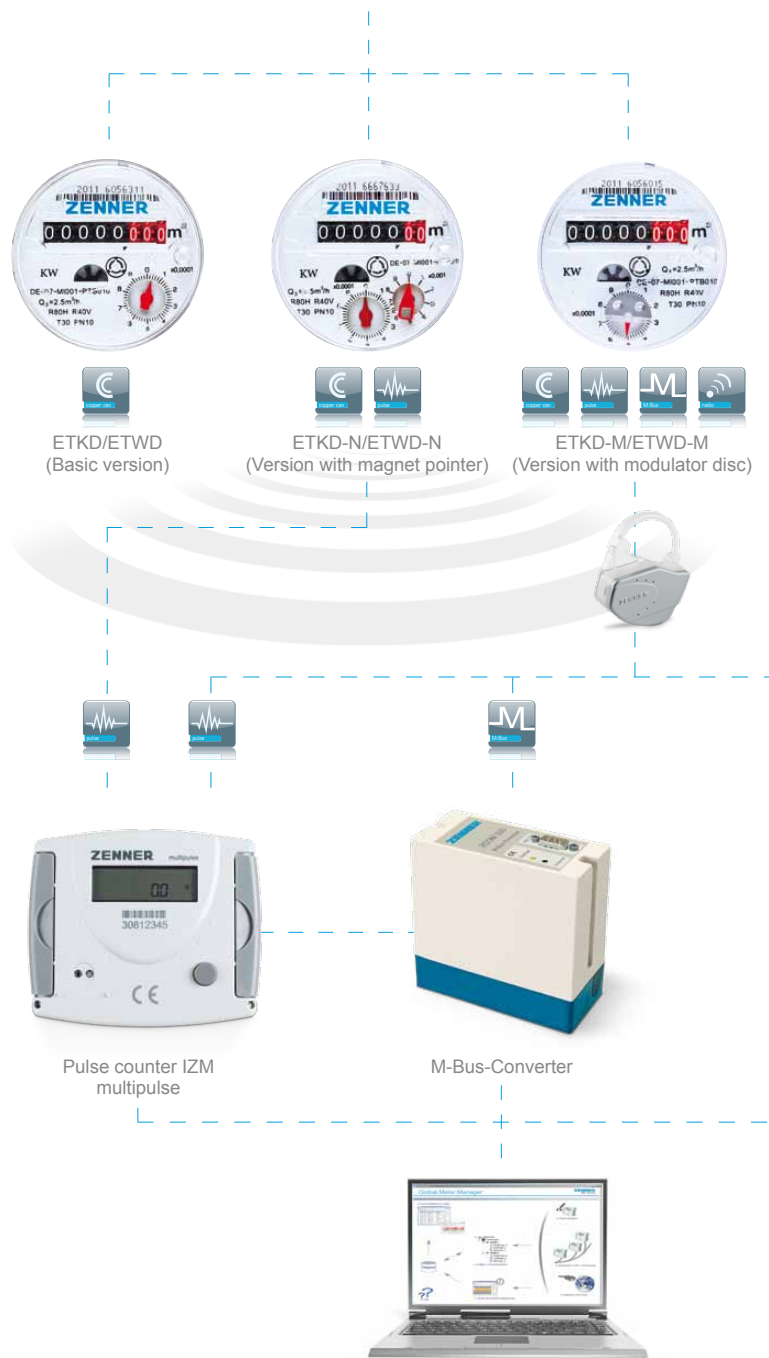
The ETKD makes a technical leap forward in development with its newly developed modulator disc. This makes possible non-reactive, electronic scanning with a variable resolution and is the basis for remote reading via radio, M-Bus or pulse module.

Performance characteristics in overview

- Dry dial counter with shielded magnetic coupling
- Counter equipped with 8-digit as standard
- optionally: reaction-free pulse detection for radio, M-Bus or pulse output
- Counter 360° rotatable
- Operating pressure PN 16
- For horizontal and vertical installation
- Model with 7- or 8-digit counter and magnetic pointer is retrofittable with pulser (10l/Imp. or 1l/Imp.)



Single-jet meter
ETKD/ETWD



Pulse counter IZM
multipulse

M-Bus-Converter



Options at a glance

Body and counter



7- or 8-digit counter

The ETKD is available with a 7- or 8-digit counter. The version with 7-digit and a magnetic counter can be scanned by Reed pulser.



Modulator disc

With the modulator disc, the counter of the ETKD is prepared for electronic and non-reactive scanning and has the optimum features for reliable and error-free data transfer via radio, M-Bus or pulse. Other features are protection against tampering and water flow direction detection.



"Copper Can" option (IP 68 protection rating)

In this version, the counter is enclosed in a robust copper jacket and, as a result, is optimally protected against condensation, dust and environmental influences.

Smart metering options



Pulse output-ready

Both the ETKD 7-digit model with magnet pointer and the 8-digit model with modulator disc provide the option of reading the counter data remotely.



M-Bus-ready

Using a special add-on M-Bus module, the ETKD 8-digit counter model with modulator disc can be integrated into an M-Bus system, in which all counters on a property are connected together and can be read centrally.

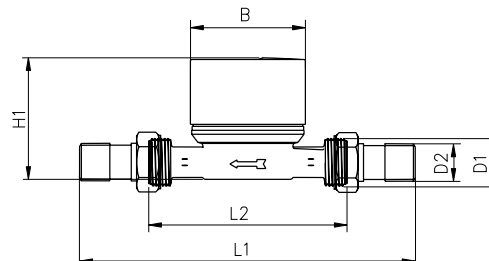
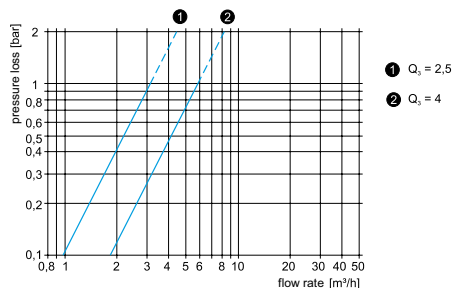


Radio-ready

With the addition of an add-on radio module, the ETKD model with modulator disc can be read via radio (wM-Bus as per OMS). A radio module transmits the counter data to a radio modem and these are relayed to a PC or hand-held computer via Bluetooth.



MinoConnectRadio



Technical data					
Permanent flow	Q_3	m^3/h	2,5		4
Comparable to nominal flow (EWG)	Q_n	m^3/h	1,5		2,5
Overall length without connectors	L2	mm	80	110	130
Overall length with connectors approx.	L1	mm	160	190	226
Thread at meter G x B	D1	inch	$\frac{3}{4}$	$\frac{3}{4}$	1
Thread at connector R x	D2	inch	$\frac{1}{2}$	$\frac{1}{2}$	$\frac{3}{4}$
Nominal diameter	DN	mm	15	15	20
	DN	inch	$\frac{1}{2}$	$\frac{1}{2}$	$\frac{3}{4}$
Standard measuring range	Q_3/Q_1	R	40H/40V	80H/40V	
Comparable to metrological class (EWG)	class		A*H/A*V	B*H/A*V	
Maximum flow	Q_4	m^3/h	3,125		5
Minimum flow	Q_1	l/h	62,5	31	50
Start-up flow rate		l/h	10	14	
Maximum temperature	-	$^{\circ}C$	30/90		
Operating pressure	PN	bar	16		
Pressure loss at	Q_4	bar	<1		
Width	B	mm	66		
Height	H1	mm	77	80	
Weight		kg	0,42	0,44	0,52

ZENNER International GmbH & Co. KG

Römerstadt 4
D-66121 Saarbrücken

Telephone +49 6 81 99 676-30
Telefax +49 6 81 99 676-3100

E-Mail info@zenner.com
Internet www.zenner.com